

LIVE OAK





Luxury Patio Homes



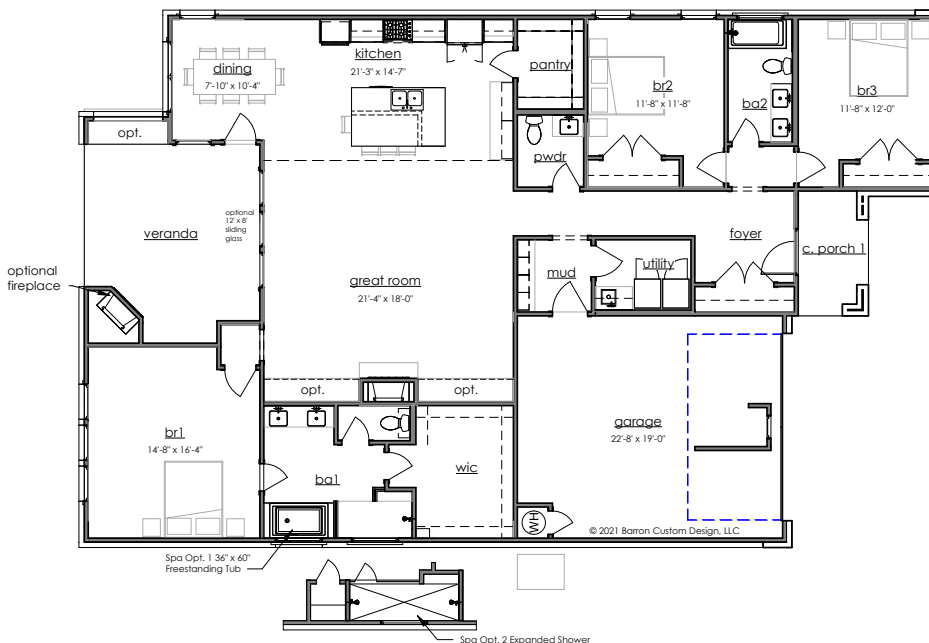
The Grove
AT GREENS PRAIRIE
RESERVE



Floor Plan Details

 **3**
 **2.5**
 **2**
 **2,135 SF**

Great Room	21'4" x 18'0"
Bedroom 1	14'8" x 16'4"
Bedroom 2	11'8" x 11'8"
Bedroom 3	11'8" x 12'0"
Kitchen	21'3" x 14'7"
Dining Room	7'10" x 10'4"
Garage	22'8" x 19'0"



ALLISON POLKA
Community Sales Manager
(979) 243-2000
greensprairiereserve.com

Exclusively marketed by:



The information above has been obtained from sources believed reliable. While we do not doubt its accuracy, we have not verified it and make no guarantee, warranty or representation about it. It is your responsibility to independently confirm its accuracy and completeness. Any projections, opinions, assumptions or estimates used are for example only and do not represent the current or future performance of the property. The value of this transaction to you depends on tax and other factors which should be evaluated by your tax, financial and legal advisors. You and your advisors should conduct a careful, independent investigation of the property to determine to your satisfaction the suitability of the property for your needs. Property and improvements are not guaranteed to be constructed exactly as shown or described hereon. Substitutions, modifications and/or deviations may occur at the discretion of Builder.

KF04262022

